



## Villa Mareblù

CIS LE07508691000003375

Enchanting Villa overlooking the sea in the stretch of coast that goes from Tricase to Santa Maria di Leuca, Villa Mareblù is immersed in a terraced garden of about 3.000sqm and characterized by a truly unique panoramic view of the coast!

### COMPOSITION

The villa consists of a main body on the first floor and an annex located on a lower floor of the terrace which is accessed via an external stone staircase.

Main body: small living room with fully equipped kitchenette, sofa and fireplace; 1 double bedroom with sea view, wooden ceiling, built-in wardrobe and bathroom with shower.

Outside on the same floor there are: a large patio, a whirlpool tub, a shower, a large terrace with a table for 12 people, a built-in sofa, deck chairs and a laundry area with sink and washing machine.

Dependance: charming double bedroom in masonry with a built-in wardrobe and bathroom with shower. In this

room there is also a single bed so it can be used as a triple.

Outside on this level there are: a garden overlooking the sea and a large terrace with built-in sofas and a shower.

#### EQUIPMENT

Both units have mosquito nets on all windows and outdoor showers. The main building has satellite TV; Wifi; dishwasher and external washing machine; private parking for 2 cars.

Note: Weekly prices include: gas consumption, use of bed/bathroom linen and the first water load of the cistern (each further load € 40.00). The consumption of electricity is borne by the conductor, at the rate of € 0.50 per kWh. Final cleaning € 150.00. The additional linen change is available at a cost of € 30. Duties available on request at a cost of € 10 per hour for a minimum of 3h. Pets allowed on request at the additional cost of € 50 each. Reassessment deposit € 500. As per regulatory provisions, the payment of the tourist tax is provided.

#### Main Distances:

From the sea: 280 meters; the closest access to the sea (rocky coves) 1.1 Km.

Boat rental possible in the nearby village for excursions and trips to the enchanting crystalline bays of the area.

Large Maldive-like Sandy Beaches of Pesculuse: 14 km.

Nearest village on the sea: 3.5 Km – Marina di Novaglie

Shopping possibilities: Tiggiano, 3 km

Restaurants: 1 km

S.m. Leuca: 16 km

Otranto (with its cathedral and its beaches): 37 km

Gallipoli (last outpost of Magna Grecia): 55 km

Lecce (capital of the Baroque): 58 km

Acaya 18 hole Golf Club: 58 km

Brindisi (nearest airport): 105 km

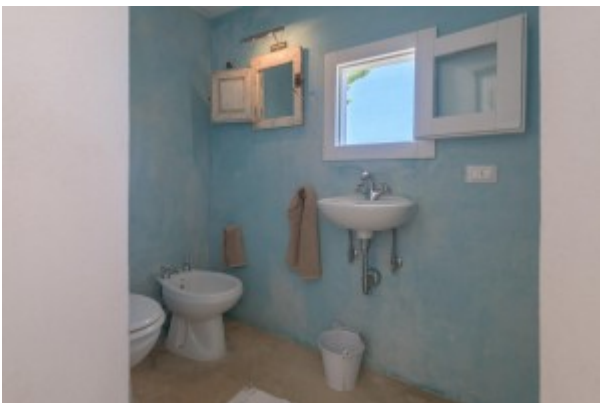
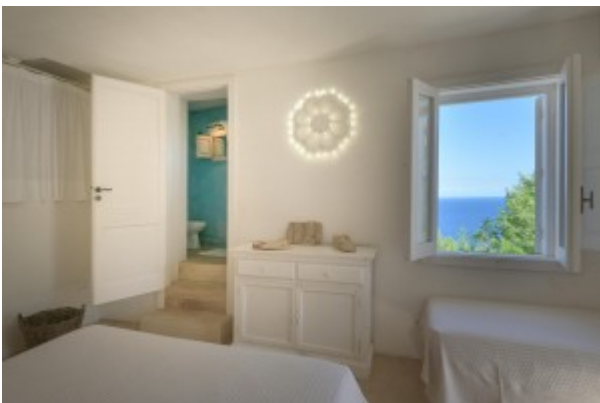
Bari: 213 km (airport)

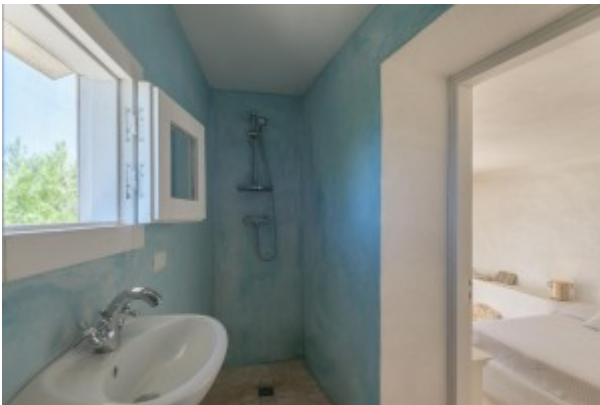




















## TARIFFE 2024

dal 01 al 17 maggio	€ 1.265	a settimana
dal 18 maggio al 21 giugno	€ 1.785	a settimana
dal 22 giugno al 19 luglio	€ 2.470	a settimana
dal 20 luglio al 23 agosto	€ 3.590	a settimana
dal 24 agosto al 06 settembre	€ 2.470	a settimana
dal 07 al 13 settembre	€ 1.785	a settimana
dal 14 al 30 settembre	€ 1.265	a settimana

Pulizia finale	€ 150
Deposito cauzionale	€ 500